



Aerosolized 4D-710 for the Treatment of Cystic Fibrosis (CF) Lung Disease



Interim Phase 1/2 Safety & Efficacy Data and
Program Update

June 6, 2024

Legal Disclaimer

This Presentation contains forward looking statements that involve substantial risks and uncertainties. All statements, other than statements of historical facts, contained in this Presentation, including statements regarding our clinical development plans, strategy, future operations, future financial position, prospects, plans, and objectives of management, are forward looking statements. The words “anticipate,” “believe,” “continue,” “could,” “estimate,” “expect,” “intend,” “may,” “plan,” “potential,” “predict,” “project,” “target,” “should,” “would,” and similar expressions are intended to identify forward looking statements, although not all forward looking statements contain these identifying words. We may not actually achieve the plans, intentions, or expectations disclosed in these forward looking statements, and you should not place undue reliance on these forward looking statements. Actual results or events could differ materially from the plans, intentions and expectations disclosed in these forward looking statements. In addition, the forward looking statements included in this Presentation represent our views as of the date of this Presentation. We anticipate that subsequent events and developments will cause our views to change. However, while we may elect to update these forward looking statements in the future, we specifically disclaim any obligation to do so. These forward looking statements should not be relied upon as representing our views as of any date subsequent to the date of this Presentation.

This Presentation discusses our product candidates that are under preclinical study and in clinical trials, and which have not yet been approved for marketing by the U.S. Food and Drug Administration. No representation is made as to the safety or effectiveness of our product candidates for the therapeutic use for which they are being studied.

This Presentation also contains estimates and other statistical data made by independent parties and by us relating to market size and other data about our industry. This data involves a number of assumptions and limitations, and you are cautioned not to give undue weight to such data and estimates. In addition, projections, assumptions and estimates of our future performance and the future performance of the markets in which we operate are necessarily subject to a high degree of uncertainty and risk.

This Presentation shall not constitute an offer to sell or the solicitation of an offer to buy securities.

Positive New Data Supports Aerosolized 4D-710's Potential as a Durable Genetic Medicine for Cystic Fibrosis Lung Disease

Wholly-Owned Pulmonology Franchise

- **Next-generation aerosolized A101 vector for large-market lung diseases:**
4D-710 for CF & 4D-725 for A1AT deficiency lung diseases

Interim Data from 4D-710 AEROW Phase I Dose Exploration Stage
(Single aerosolized dose, Four dose levels ranging from 2.5E14 to 2E15 vg dosed in 10 participants)

Lung Function (ppFEV₁):
Improved (+5% & +6%) in 2 of 3 participants with >6 months of follow up and baseline ppFEV₁ ≤80%

Safety & Tolerability:
Well tolerated at dose levels up to 1E15 vg

Lung Biopsy:
Dose-dependent 4D-710 transgene expression
Widespread CFTR protein expression in all doses & all participants studied

Pre-existing A101 Immunity:
No effect on:
Transgene Expression
Clinical Activity
Safety

Next Steps

Cleared to Begin Phase 2 Expansion Stage (n= up to 9; begin dosing H2 2024):
Expect to evaluate **1E15 vg**; inclusion of 5E14 vg dose pending enrollment & follow-up from 3rd participant in Phase I 5E14 vg cohort

Next interim data update expected mid-2025 after completing enrollment and f/u of Phase 2

Best available data as of May 24, 2024.

AI01 Lung Vector is Among Three Proprietary, Highly Targeted Next-Generation AAV Vectors Invented at 4DMT & in Clinical Development

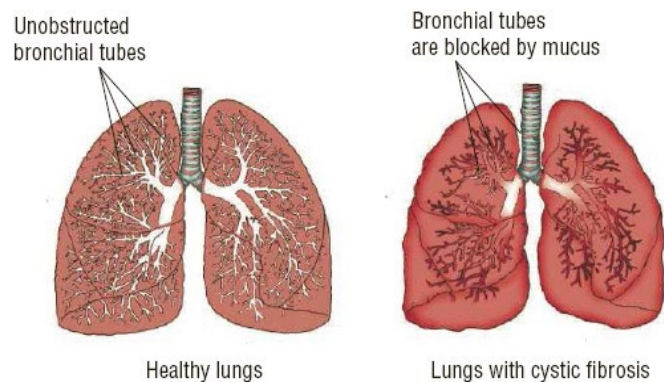
VECTOR / DELIVERY	PRODUCT CANDIDATE	INDICATION	ESTIMATED PREVALENCE	RESEARCH CANDIDATE	IND-ENABLING	PHASE 1/2	PHASE 3	PRODUCT RIGHTS
OPHTHALMOLOGY R100 Intravitreal	4D-150	Wet AMD	~3M U.S./EUMM	[Progress bar]				4DMT
		DME	~5M U.S./EUMM	[Progress bar]				
	4D-125	XLRP	~24K U.S./EUMM	[Progress bar]				4DMT
	4D-110	Choroideremia	~13K U.S./EUMM	[Progress bar]				4DMT
	4D-175	Geographic Atrophy	~2.5M U.S./EUMM	[Progress bar]				4DMT
	Undisc. <i>Vector licensed to Astellas</i>	Undisclosed Rare Disease	Undisc.	[Progress bar]				astellas
PULMONOLOGY AI01 Aerosol	4D-710	CF Lung Disease (mod. ineligible/intol)	~15K WW	[Progress bar]				4DMT
		CF Lung Disease (combo w/ mods)	~90K WW	[Progress bar]				
	4D-725	AIATD Lung Disease	~200K U.S./EUMM	[Progress bar]				4DMT
CARDIOLOGY CI02 IV	4D-310*	Fabry Disease Cardiomyopathy	~50-70K U.S./EUMM	[Progress bar]				4DMT
CNS B SERIES Multiple	Unnamed <i>Led by Arbor</i>	Amyotrophic Lateral Sclerosis	~79k U.S./EU/UK	[Progress bar]				arbor biotech 50/50 WW

*Currently on clinical hold.

CF Lung Disease Has High Unmet Medical Need Despite Modulators

Disease Burden

- **Dysfunctional cystic fibrosis transmembrane conductance regulator (CFTR) protein** → inability to transport chloride at the apical membrane → thickened mucus
- **Lung disease:** inflammation, infections, respiratory failure
- **Lung function (ppFEV₁) annual decline:** -1 to -2.3%^{1*,2}
- **Median survival (Pre-modulators):** ~40 years³



Epidemiology

- **~105,000^{4,5} prevalence worldwide:**
 - ~40,000 prevalence in U.S. alone
 - ~1,000 incidence in U.S. alone

Standard of Care

- **Daily Supportive Care:**
 - Airway clearance (~100 mins)
 - Inhaled antibiotics & bronchodilators
- **Disease modifying CFTR modulators:**
 - **\$9.9 billion** annually (2023)⁶

Illustration by Frank Forney. © 2016 Cengage Learning *Estimate based on DF508 homozygous population, which appears to have a similar rate of decline as Class I (null) variant population. 1. Konstan MW et al. *Lancet Respir Med* 2017; 5:107–18. 2. Caley et al. *Journal of Cystic Fibrosis* 2021;20:86–90. 3. Ramsey & Welsh. *Am J Respir Crit Care Med* 2017;195(9):1092–9. 4. Guo J et al. *Journal of Cystic Fibrosis* 2022; 21:456–62. 5. Cystic Fibrosis Foundation. 6. Vertex Pharmaceuticals FY 2023 financial results. ppFEV₁, percent predicted forced expiratory volume in 1 second.

AI01: Next-Gen Aerosolized Genetic Medicine Vector for Pulmonology

Prior aerosol gene therapy trials failed to achieve transgene expression in lung^{1,2}; potential limitations:

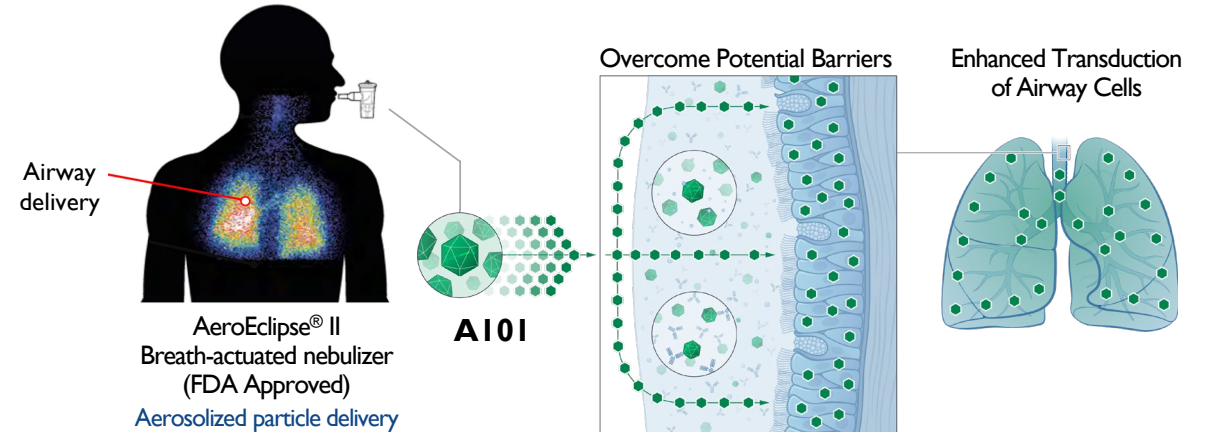
- ✗ Poor mucus penetration
- ✗ Inefficient airway cell transduction
- ✗ Suboptimal tissue tropism
- ✗ Susceptibility to clearance by human AAV immunity

AI01 invented at 4DMT to overcome these limitations:

- ✓ Mucus penetration efficient
- ✓ Transgene expression efficient
- ✓ Transduction of multiple airway cell types
- ✓ Specificity for lung (>99.9%)
- ✓ Resistance to pre-existing human AAV immunity

1. Aitken ML et al. Hum Gene Ther 2001; 12:1907-16. 2. Moss RB et al. Chest 2004;125:509-21.

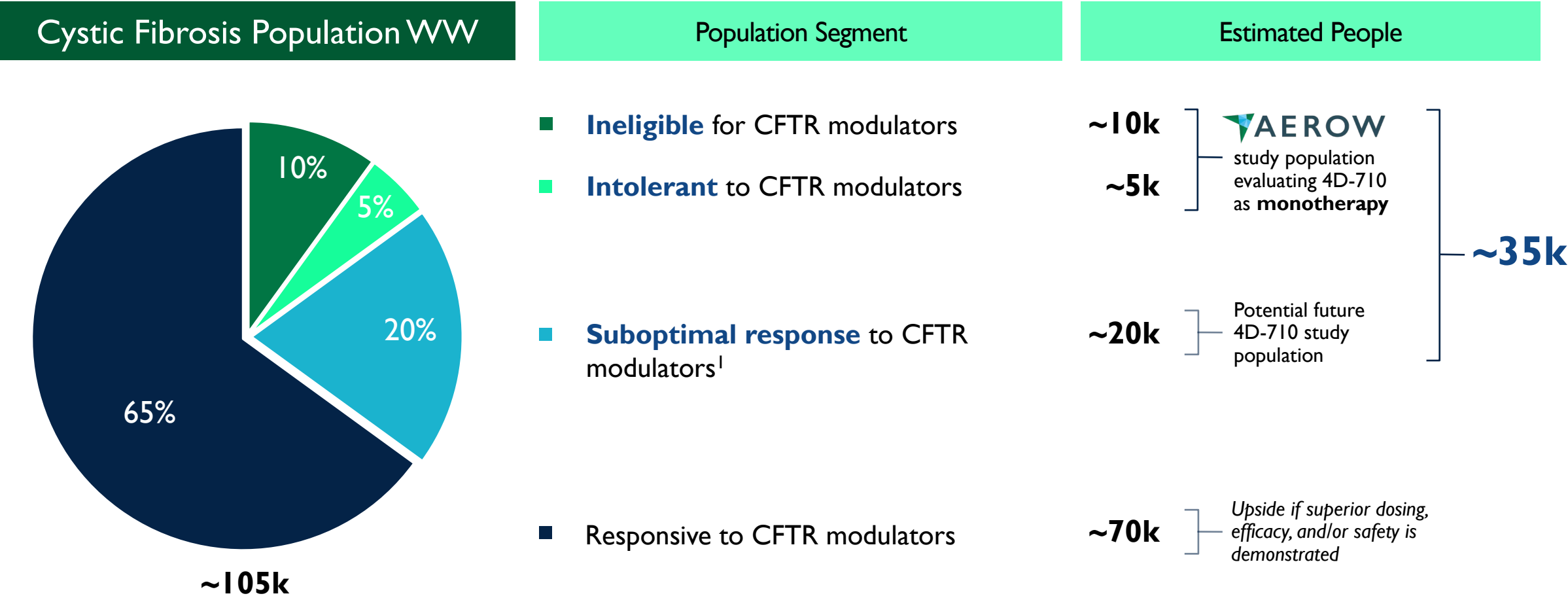
Aerosolized AI01-Based Genetic Medicines



Product	Indication	Prevalence	Preclinical	Phase 1/2	Phase 3
4D-710	CF Lung Disease (monotherapy)	~15K WW	████████████████████	████████████████████	
	CF Lung Disease (w/ modulators)	~90K WW	████████████████████	████████████████████	
4D-725	AIAT Deficiency Lung Disease	~200K U.S./EU	████████████████████		

Highest Unmet Need in ~35K People with Cystic Fibrosis

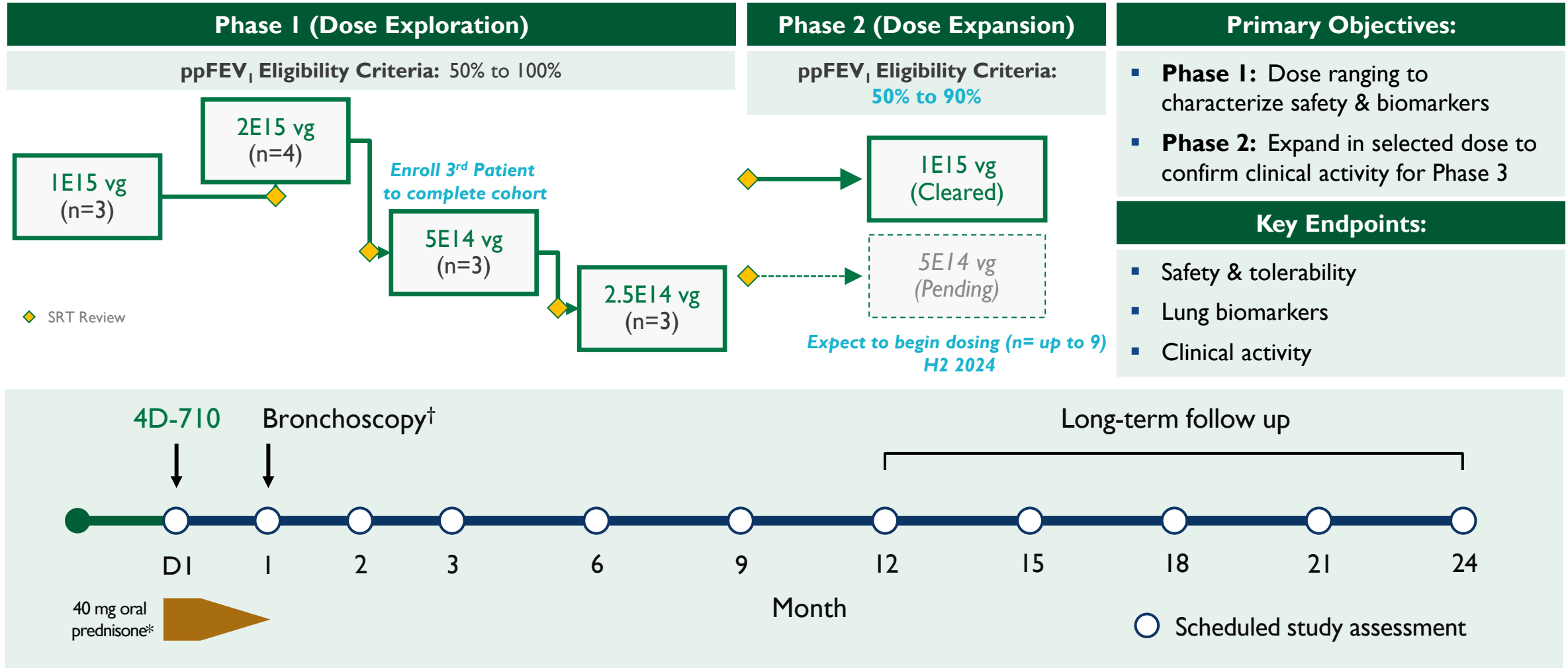
4D-710 has the Potential to Treat Cystic Fibrosis Lung Disease Regardless of Genetic Variant



CFTR, cystic fibrosis transmembrane conductance regulator. 1. Based on assumptions derived from Middleton, 2019 and CFF registry analysis.

Phase 1/2 Designed to Identify Doses for Late-Stage Development

Generate Safety, Biomarker & Clinical Activity Data to Determine & Confirm Phase 2 & 3 Dose



*28-day taper. †Endobronchial biopsy (4D-710 transgene and protein expression), pending protocol amendment to allow for 2nd biopsy beyond 12 months. ppFEV₁, percent predicted forced expiratory volume in 1 second; SRT, Safety Review Team.

AEROW To-Date Enrolled pwCF Ineligible or Intolerant to Modulators with a Broad Range of Disease Activity, 5 with Pre-Existing Immunity to A101

Participant #	2E15 vg				1E15 vg			5E14 vg		2.5E14 vg
	1	2	3	4	1	2	3	1	2	1
Age, y	37	27	32	69	36	24	20	42	39	25
Sex	Female	Male	Female	Female	Male	Male	Female	Female	Female	Male
Race/Ethnicity	Non-Hispanic White	Non-Hispanic White	Non-Hispanic White	Non-Hispanic White	Non-Hispanic White	Non-Hispanic White	Non-Hispanic White	Non-Hispanic White	Non-Hispanic Black	Non-Hispanic White
CFTR modulator status	Ineligible	Ineligible	Ineligible	Intolerant	Intolerant	Ineligible	Ineligible	Intolerant	Ineligible	Ineligible
Historical Sweat chloride, mmol/L [†]	84	96	103	114	74	103	110	107	134	120
ppFEV ₁	90	56	80	86	83	69	95	100	77	58
CFQ-R-R score	78	72	89	78	72	61	83	72	78	28
Anti-A101 Ab	Negative	Negative	Negative	Negative	Positive	Negative	Positive	Positive	Pending	Negative
A101-specific T cells	Positive	Negative	Negative	Negative	Negative	Positive	Positive	Pending	Pending	Pending

Best available data as of May 24, 2024. [†]Sweat chloride normal range ≤29 mmol/L. Diagnosis of Cystic Fibrosis: Consensus Guidelines from the Cystic Fibrosis Foundation (2017). pwCF = people with cystic fibrosis; CFTR, cystic fibrosis transmembrane conductance regulator; CFQ-R-R, Cystic Fibrosis Questionnaire–revised respiratory domain; NAb, neutralizing antibodies.

4D-710 Safety & Tolerability: Results with Highest Dose Studied (2E15 vg)

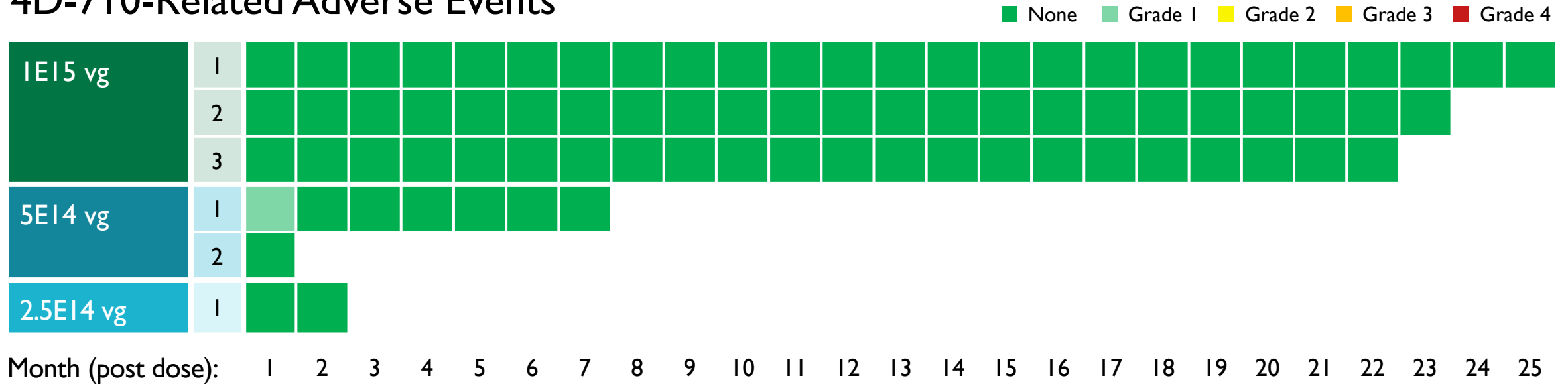
Duration of Follow Up: 13–17 Months (n=4)

- Treatment-related adverse events:
 - Transient pneumonitis & FEV₁ decline (n=1 participant)*; both resolved
 - No new SAE
 - Complete resolution of previously reported SAE (pneumonitis NOS, n=1 participant)
 - ppFEV₁ improved from baseline (+6% at month 12; last timepoint assessed)
- Lung biopsy biomarkers (weeks 4–8):
 - No inflammation or toxicity
 - CFTR protein expression
 - Significant over-expression: ~400% higher in epithelium compared to normal (non-CF) lung samples
 - No increase in expression: vs. 1E15 vg dose
 - Widespread expression in interstitium: negative in normal lung controls
- **1E15 vg selected as highest dose for dose exploration; no further evaluation of 2E15**

Best available data as of May 24, 2024. *Both events reported by one study participant (Participant 2). ppFEV₁, % predicted forced expiratory volume in 1 second; SAE, serious adverse event; NOS, not otherwise specified.

Aerosolized 4D-710 (Up to 1E15 vg) Was Well Tolerated

4D-710-Related Adverse Events





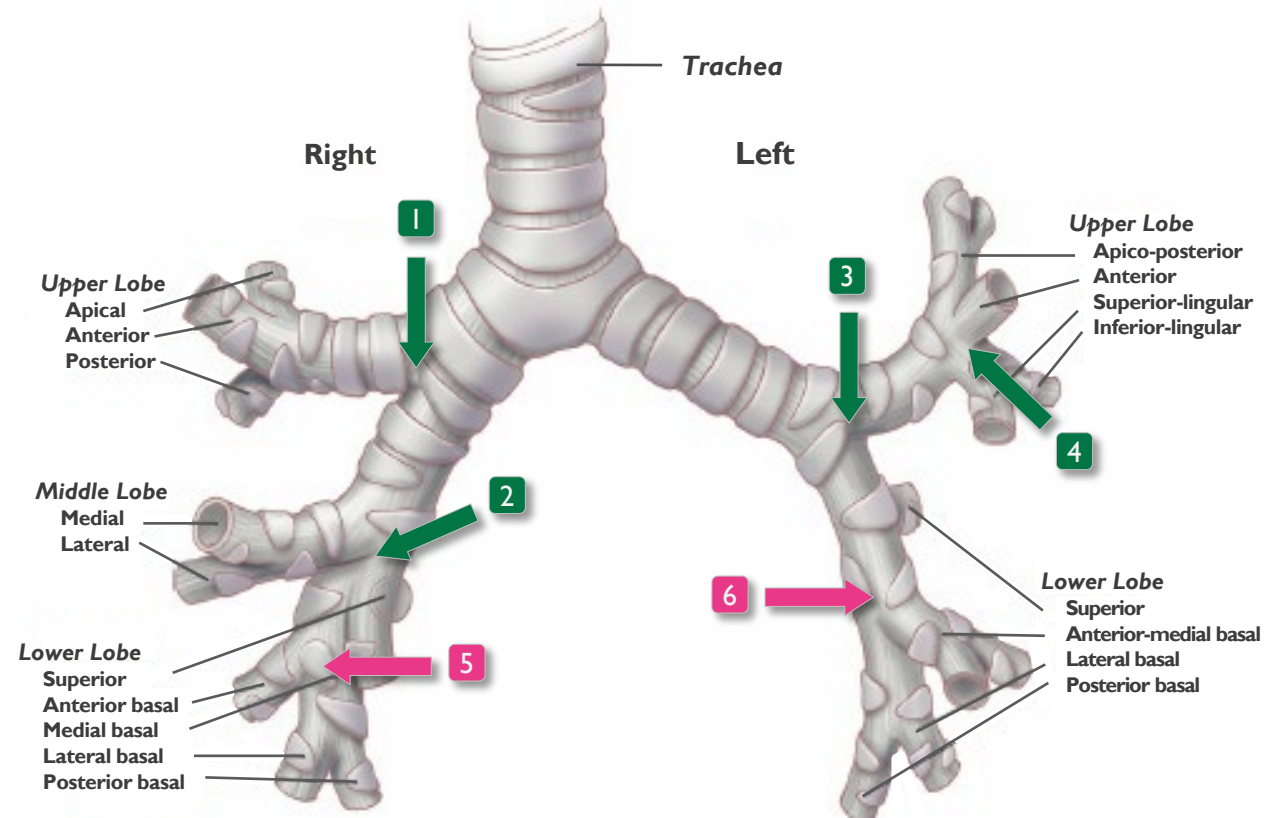
- Administration of aerosolized 4D-710 well tolerated
 - No dose-limiting toxicities
 - No 4D-710–related SAEs
 - No clinically significant 4D-710-related adverse events after administration
- No inflammation or toxicity in lung biopsies samples

Best available data as of May 24, 2024.

Biopsies & Brushings Collected in Multiple Lung Lobes Bilaterally For DNA, RNA & Protein

Bronchoscopy: Week 4–8*

Bronchoscopic Sampling Sites		Biomarker		
		RNA [†] Protein [‡]	DNA [¶]	
Endobronchial biopsy				
	1	Right secondary carina		X
	2	Right middle lobe carina	X	
	3	Left secondary carina	X	
	4	Left upper lobe/lingula carina		X
Endobronchial brushing				
	5	Right lower lobe basal seg x 2	X	
	6	Left lower lobe basal seg x 2	X	



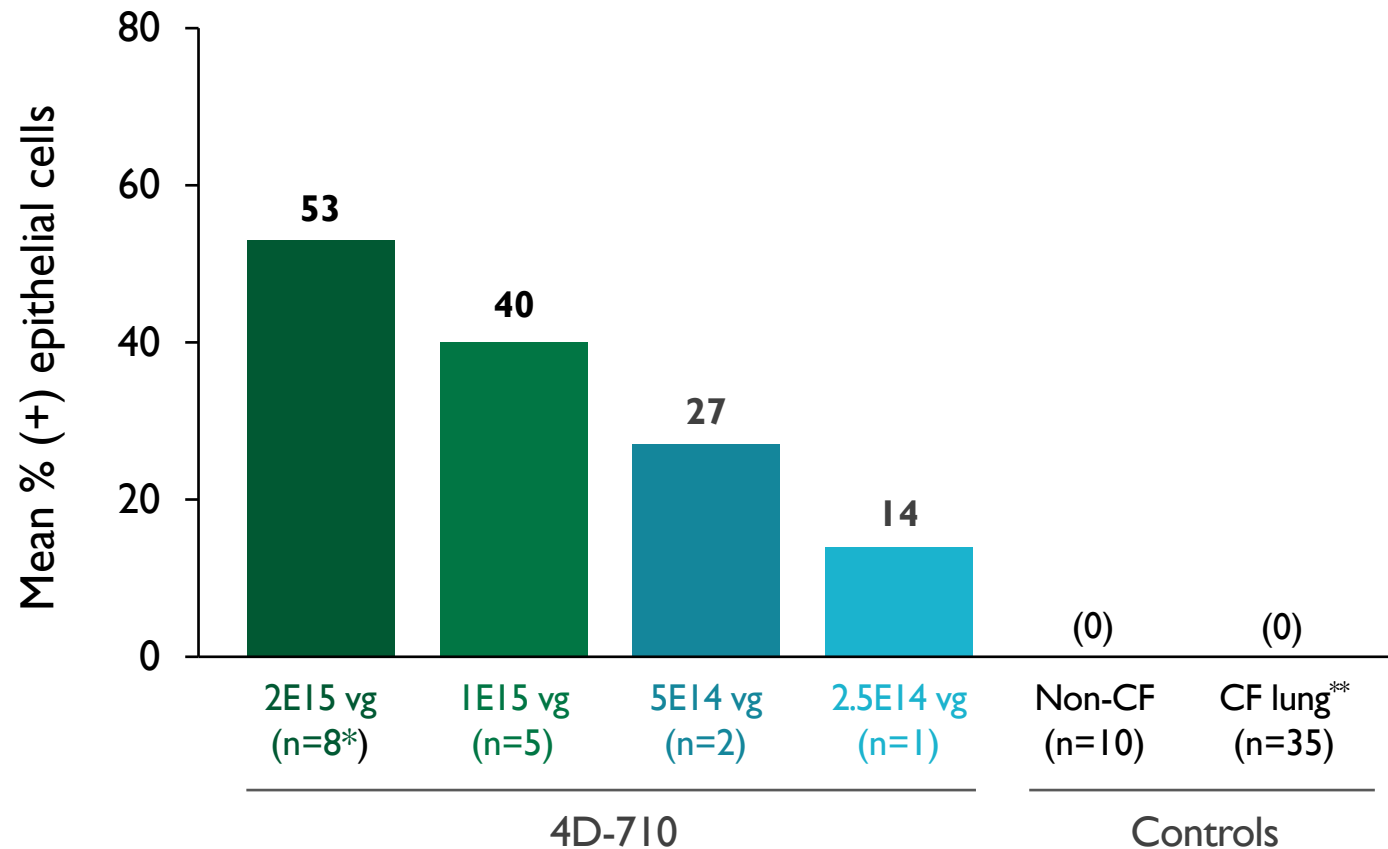
*Participant 3 bronchoscopy conducted at Week 8 due to pulmonary exacerbation (unrelated to study drug).

[†]Assessed by *in situ* hybridization. [‡]Assessed by immunohistochemistry. [¶]Assessed by quantitative PCR.

Minnich DJ, Mathisen DJ. *Thorac Surg Clin* 2007;17:571-85.

Dose-dependent $CFTR\Delta R$ RNA Expression Following 4D-710 Administration

$CFTR\Delta R$ RNA (ISH): mean % (+) airway epithelial cells

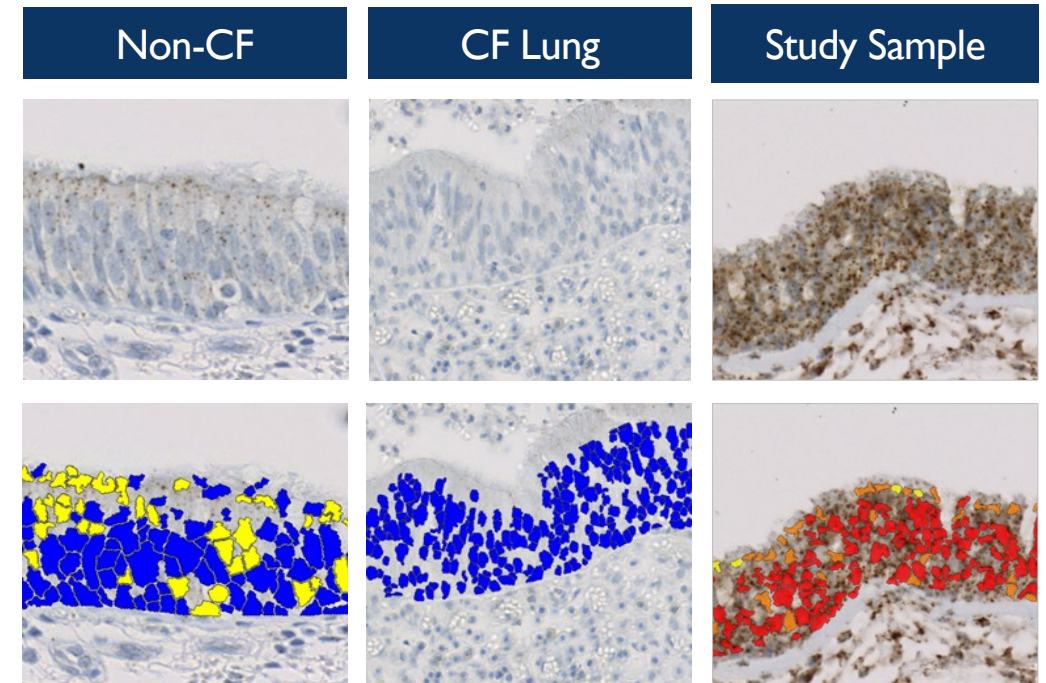


- Dose-dependent $CFTR\Delta R$ mRNA expression in bronchial epithelial cells
- No $CFTR\Delta R$ mRNA expression observed in commercial non-CF and CF lung samples
- Commercial non-CF samples positive for endogenous $CFTR$ mRNA expression

Best available data as of May 24, 2024. Quantification by Visiopharm® AI Machine Learning Analysis. *Number shown below each group indicates the number of lung samples. **Attempts to genotype commercial CF samples yielded results for 13/35 samples; of these, a majority were $\Delta F508$ homozygous mutations. CFTR, cystic fibrosis transmembrane conductance regulator; ISH, in situ hybridization.

CFTR Protein Expression: Machine Learning-Assisted Image Analysis (Quantitative & Qualitative Analyses)

- Clinical-grade image analysis software*
- Holistic & objective whole-slide analysis:
 - 100% of airway epithelial cells analyzed
 - 100% manual QC to confirm accuracy
- Percent (+) cells & H-score automatically calculated by software algorithm
- H-score (range, 0–300):
 - measure of staining intensity & distribution
 - higher scores: increased signal intensity & distribution

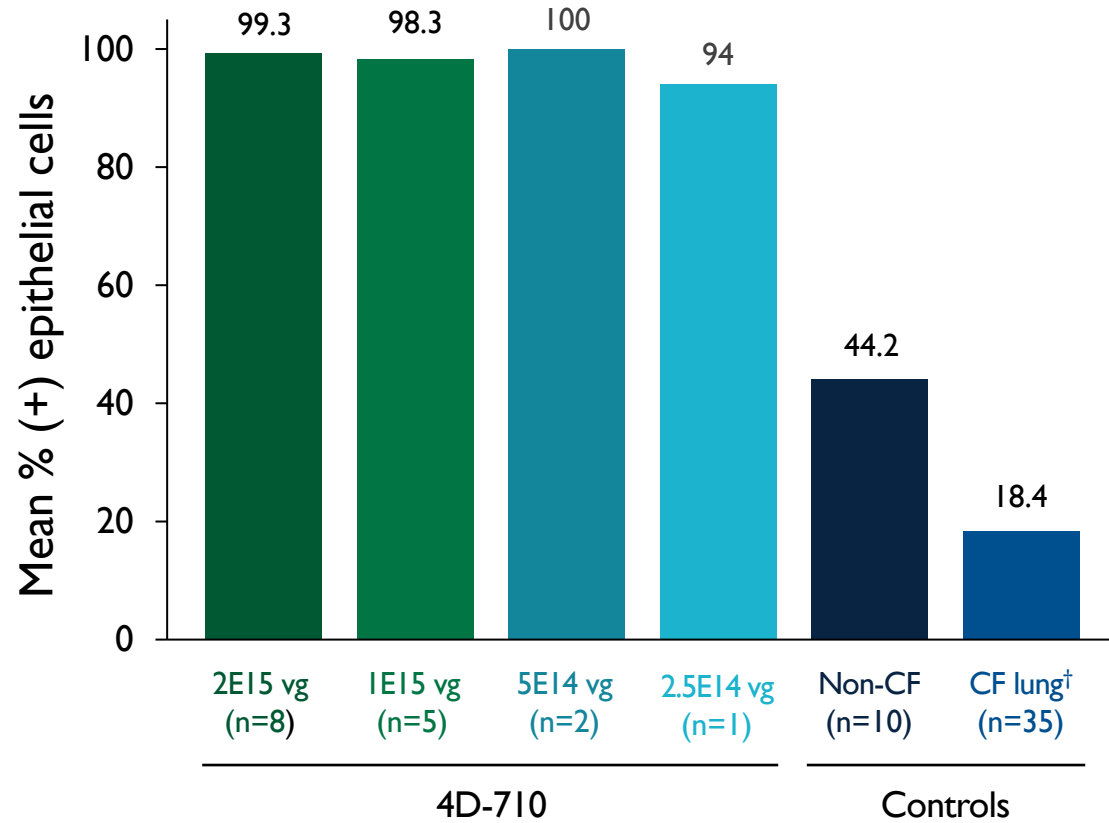


IHC staining intensity: ■ 0 ■ 1⁺ ■ 2⁺ ■ 3⁺

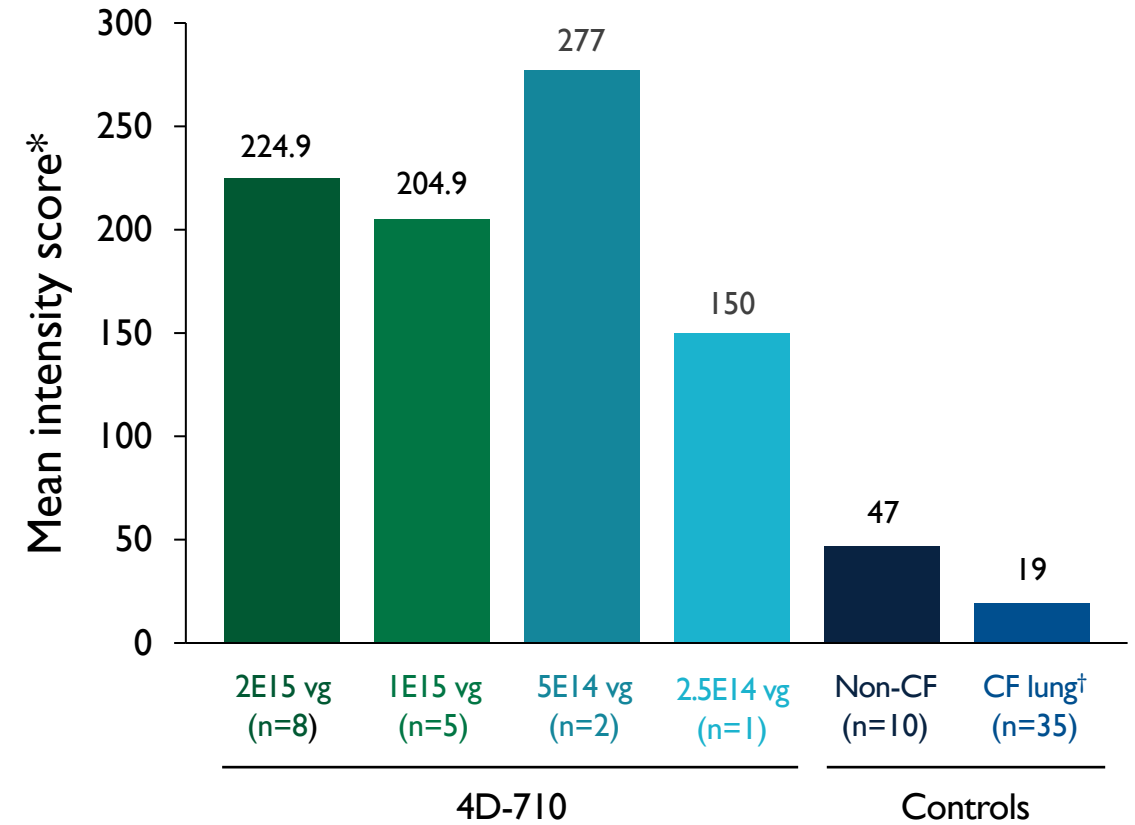
*Visiopharm® image analysis software. CFTR, cystic fibrosis transmembrane conductance regulator; IHC, immunohistochemistry.

Widespread 4D-710–Mediated CFTR Protein Expression at All Doses and in All Participants

CFTR (+) Epithelial Cells (IHC)



CFTR Staining Intensity (IHC)*



Best available data as of May 24, 2024. Quantification by Visiopharm AI Machine Learning Analysis. Number shown below each group indicates the number of lung samples. *H-score. †Attempts to genotype commercial CF samples yielded results for 13/35 samples; of these, a majority were $\Delta F508$ homozygous mutations. IHC, immunohistochemistry.

Widespread & Consistent CFTR Protein Expression: 100% of Samples

4D-710 Treated

2E15 vg				1E15 vg			5E14 vg	2.5E14 vg
Participant 1	Participant 2†	Participant 3	Participant 4	Participant 1	Participant 2†	Participant 3	Participant 1	Participant 1
					Not sampled			Not sampled

Interstitial staining at highest dose

Non-treated Controls

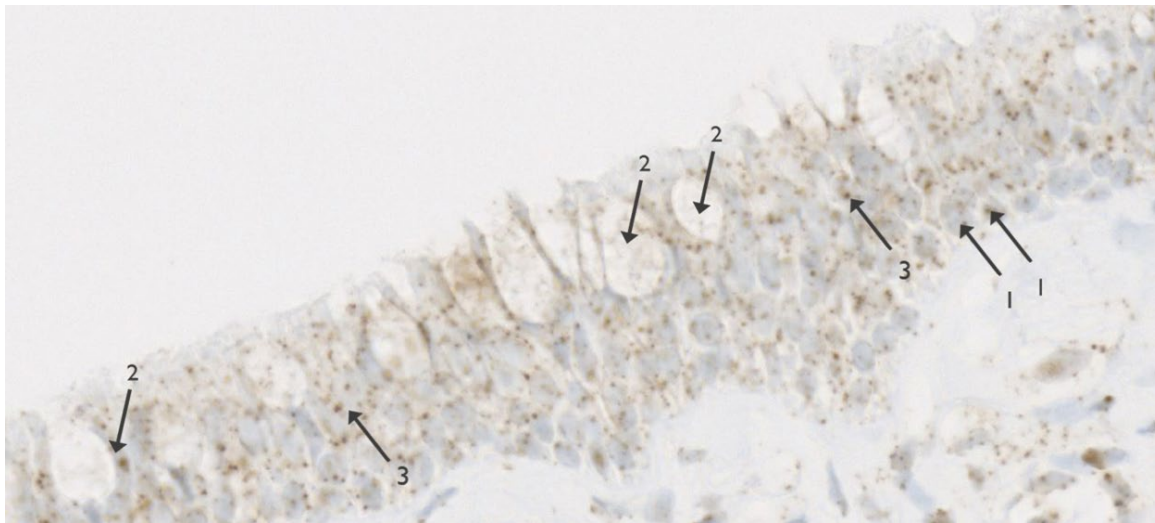
Non-CF Lung			CF Lung		

Best available data as of May 24, 2024. *Representative images, endobronchial biopsy samples obtained from the left secondary carina (row 1) and right middle lobe (row 2). †Endobronchial biopsy performed at Week 8.

CFTR Protein Expression Observed in Multiple Airway Cell Types

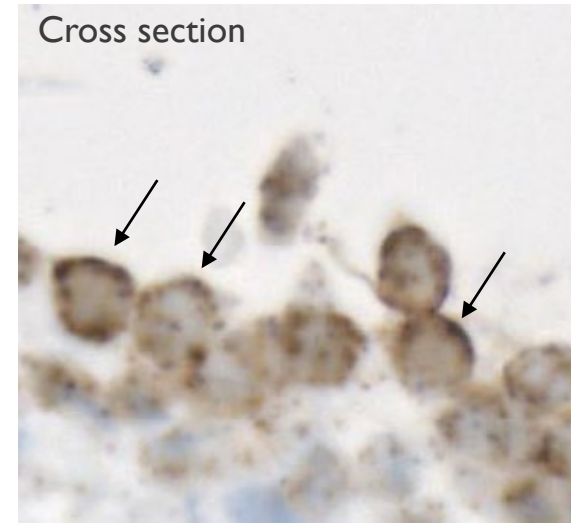
CFTR Protein Localization (IHC) Following Administration of 4D-710: Secretory, Ciliated & Basal Cells

CFTR Protein Expressed in Multiple Cell Types*



(1) Basal cells (2) Goblet cells (3) Columnar ciliated cells

Localization to Apical Region†

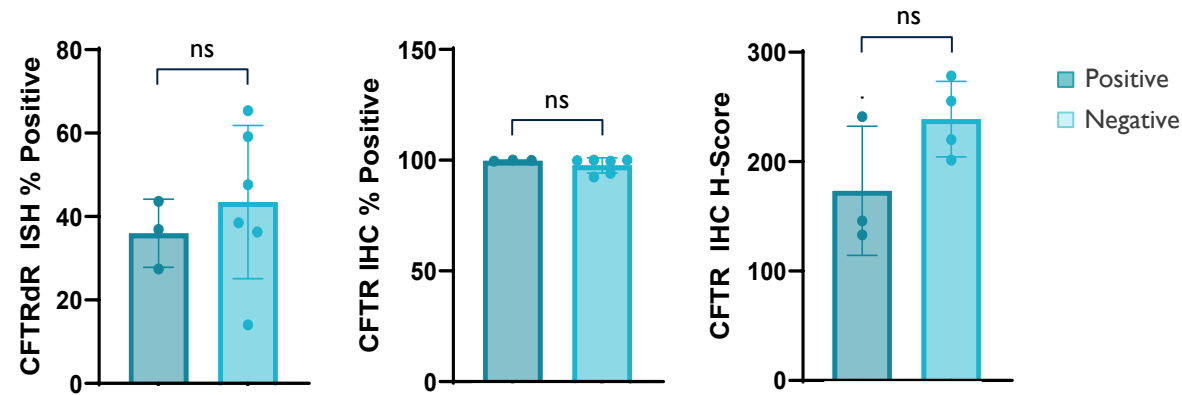


Best available data as of May 24, 2024. *Image from 1E15 vg participant. †Images from 2E15 vg participants. CFTR, cystic fibrosis transmembrane conductance regulator. IHC, immunohistochemistry.

Pre-existing A101 Immunity and Transgene-mediated Protein Expression

Pre-existing A101 Immunity Did **NOT** Affect *CFTR* RNA or *CFTR* Protein Expression

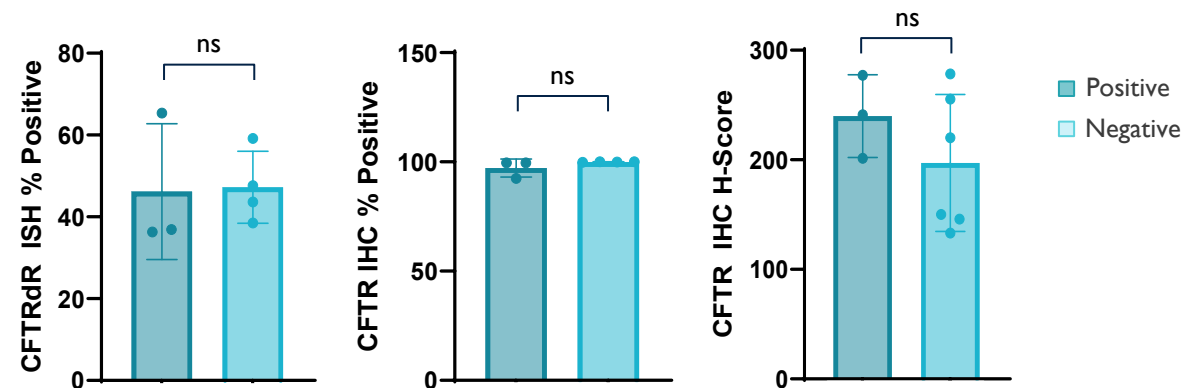
CFTR Expression According to Baseline Anti-A101 Antibodies



Pre-existing Anti-A101 Capsid Antibodies

- 3/9 positive for pre-existing A101 capsid antibodies*
- No significant difference in mRNA/protein expression** between participants with (n=3) and without (n=6) pre-existing A101 antibodies
- No observed effect of pre-existing antibodies on safety

CFTR Expression According to Baseline A101-specific T Cells



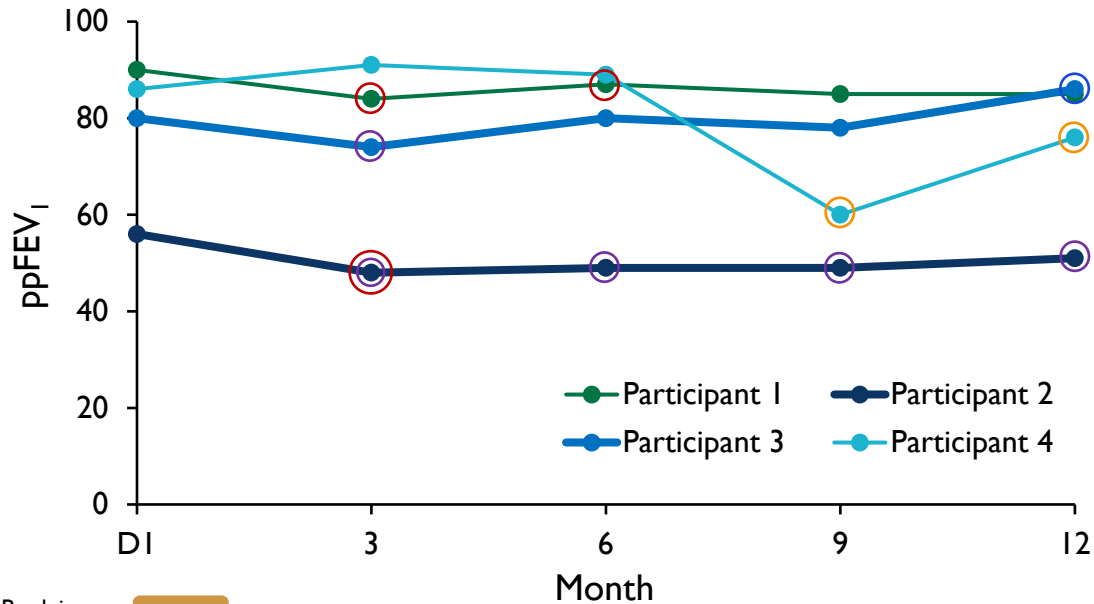
Pre-existing A101-specific T cells

- 3/7 positive for pre-existing A101-specific T cells†
- No significant difference in mRNA/protein expression** between participants with (n=3) and without (n=4) pre-existing A101-specific T cells

Best available data as of May 24, 2024. *Results pending for n=1 participant (5E14 vg group). †Results pending for n=2 and n=1 in the 5E14 vg and 2.5E14 vg cohorts, respectively.

Generally **Stable or Improved** ppFEV₁ through 12 Months (Maximum ppFEV₁ Follow-up per Original Protocol), Despite Non-4D-710 Respiratory-Related Adverse Events

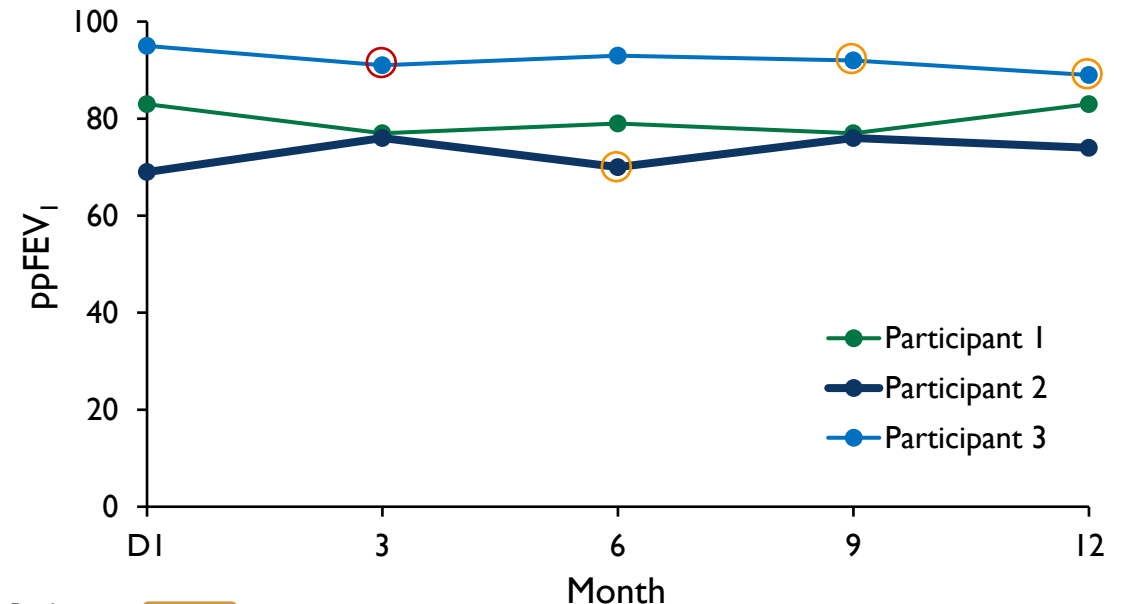
4D-710 (2E15 vg)



Prednisone

Expected Transgene expression

4D-710 (1E15 vg)



Prednisone

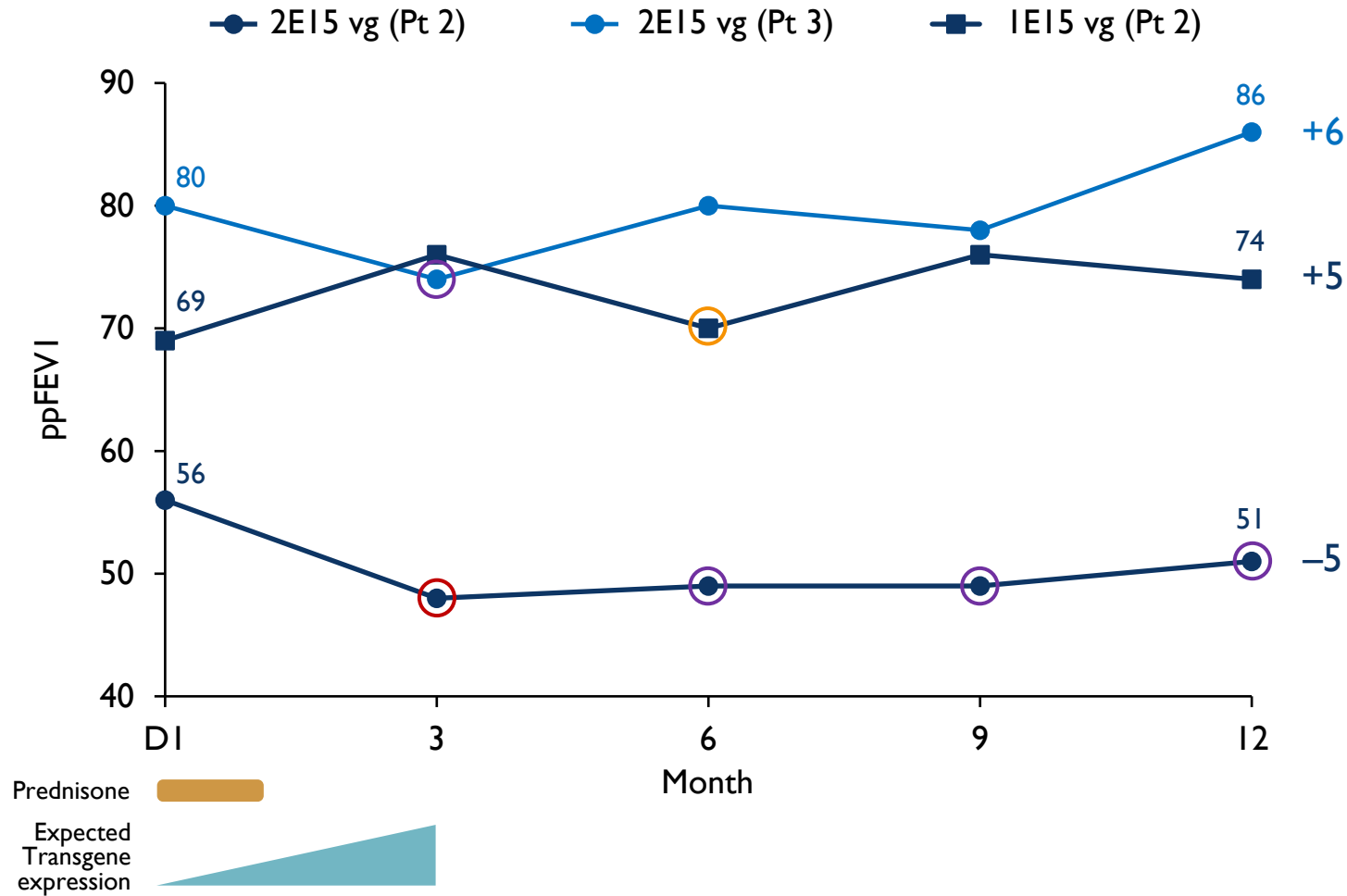
Expected Transgene expression

Pre-Modulator Era Data (ppFEV₁):
 Annual rate of decline: **-1 to -2.3%**^{1,2}
 Within-subject variability: **SD ±4.5%**³

Respiratory-related adverse events*: ○ Pulmonary exacerbation ○ Viral respiratory infection ○ Pneumonitis ○ Hemoptysis

Best available data as of May 24, 2024. *Occurring within 21 days of pulmonary function assessment. †Estimate based on DF508 homozygous population, which appears to have a similar rate of decline as Class I (null) variant population. 1. Konstan MW et al. *Lancet Respir Med* 2017; 5:107–18. 2. Caley et al. *Journal of Cystic Fibrosis* 2021;20:86–90. 3. Stanbrook MB et al. *Chest* 2004; 125:150–5.

Two of Three Participants with Mild to Moderate ppFEV₁ Impairment at Baseline Showed Improvement at 12 Months



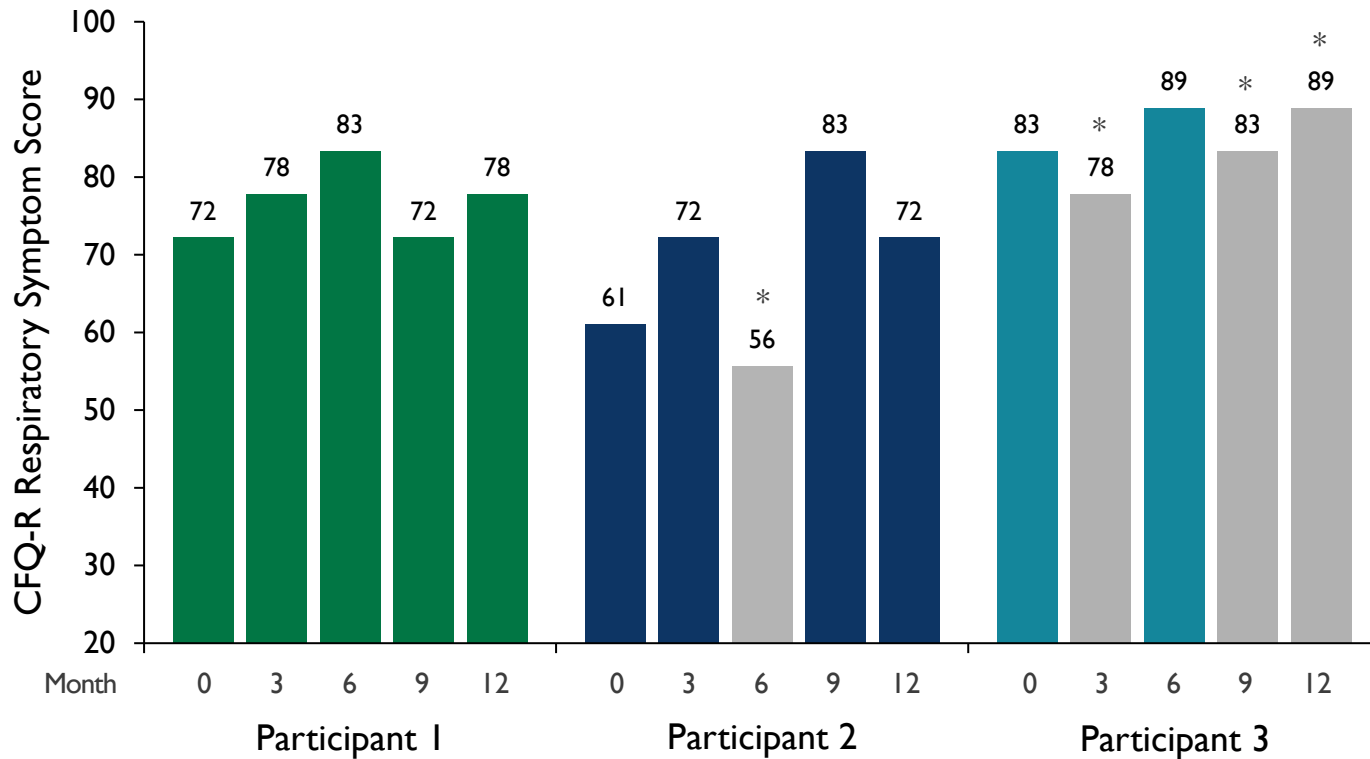
- Three participants had a baseline ppFEV₁ ≤80% and >6 months of follow up
- Two showed improvement in ppFEV₁ at 12 months
 - 2E15 vg (n=1): +6%
 - 1E15 vg (n=1): +5%

Respiratory-related adverse events*: ○ Pulmonary exacerbation ○ Viral respiratory infection ○ Pneumonitis

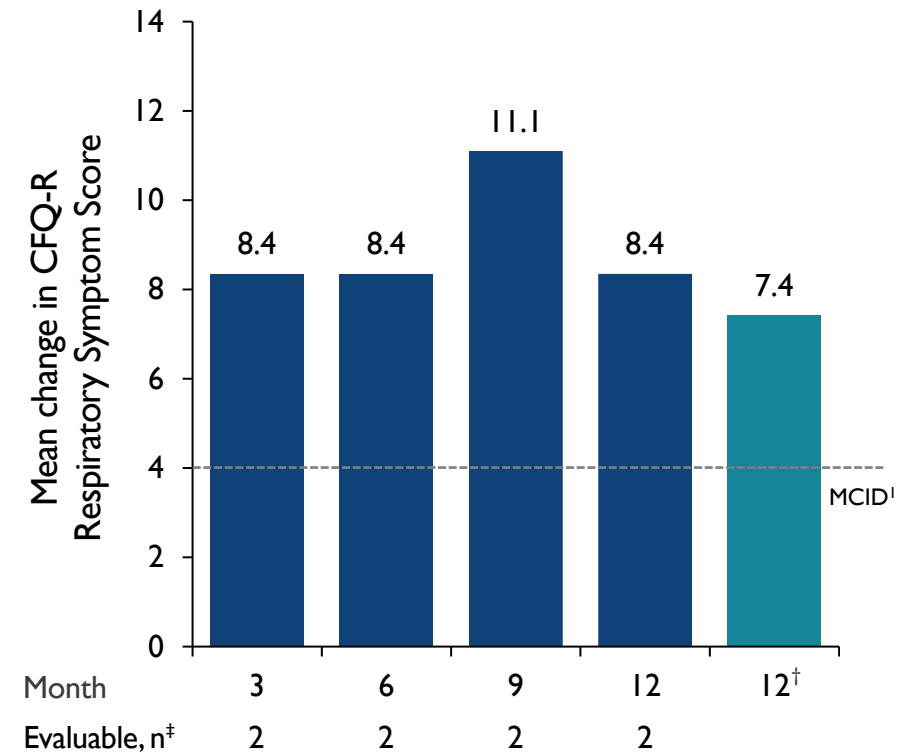
Best available data as of May 24, 2024.

4D-710 (IEI5 vg): Durable Improvement in CFQ-R-R Score

CFQ-R Respiratory Symptom Score



Mean Change in CFQ-R-R Score



Best available data as of May 24, 2024. *Respiratory-related adverse event within 21 days of assessment. †All enrolled participants (n=3). ‡Excludes participants with a respiratory-related event within 21 days of assessment. CFQ-R-R, Cystic Fibrosis Questionnaire-Revised (respiratory symptoms scale). Scores range from 0 to 100, with higher scores indicating better health. MCID=4 points [1]. 1. Quittner AL et al. Chest 2009;135:1610-18.

Totality of Clinical & Biomarker Data To-date Supports **1E15 vg** as Intended Phase 2 Expansion Dose, **5E14 vg** Dose Pending Additional Follow-Up

Dose Selection Criteria:	Target Profile	
Expression	CFTR Δ R RNA expression (ISH)	$\geq 15\%$ cells ^{1,2}
	CFTR protein expression (IHC)	$\geq 15\%$ cells ^{1,2}
	Cell types transduced	Basal cells & secretory cells
		No/limited expression in interstitial cells
	Pre-existing A101 Immunity	No effect on expression
Safety & Tolerability	Safety & tolerability	No \geqGrade 3 related AEs, no SAEs
Clinical Activity	ppFEV ₁ (at 6-12 months)	>4.5% change from baseline
	CFQ-R-R (at 6-12 months)	>4 points change from baseline

Best available data as of May 24, 2024.

*Both events reported by one study participant (Participant 2) 1. Dannhoffer L et al. Am J Respir Cell Mol Biol 2009; 40:717–23. 2. Bell S et al. Lancet Resp Med 2020; 8:65–124.

Totality of Clinical & Biomarker Data To-date Supports **1E15 vg** as Intended Phase 2 Expansion Dose, 5E14 vg Dose Pending Additional Follow-Up

Dose Selection Criteria:		Target Profile	2E15 vg (n=4)	1E15 vg (n=3)	5E14 vg (n=1)	2.5E14 vg (n=1)	
Expression	CFTR Δ R RNA expression (ISH)	$\geq 15\%$ cells ^{1,2}		✓			
	CFTR protein expression (IHC)	$\geq 15\%$ cells ^{1,2}		✓			
	Cell types transduced	Basal cells & secretory cells			✓		
		No/limited expression in interstitial cells			✓		
	Pre-existing A101 Immunity	No effect on expression			✓		
Safety & Tolerability	Safety & tolerability	No \geq Grade 3 related AEs, no SAEs		✓			
Clinical Activity	ppFEV ₁ (at 6-12 months)	$>4.5\%$ change from baseline		✓			
	CFQ-R-R (at 6-12 months)	>4 points change from baseline		✓			

Best available data as of May 24, 2024.

*Both events reported by one study participant (Participant 2) 1. Dannhoffer L et al. Am J Respir Cell Mol Biol 2009; 40:717–23. 2. Bell S et al. Lancet Resp Med 2020; 8:65–124.

Totality of Clinical & Biomarker Data To-date Supports **1E15 vg** as Intended Phase 2 Expansion Dose, 5E14 vg Dose Pending Additional Follow-Up

Dose Selection Criteria:		Target Profile	2E15 vg (n=4)	1E15 vg (n=3)	5E14 vg (n=1)	2.5E14 vg (n=1)
Expression	CFTR Δ R RNA expression (ISH)	$\geq 15\%$ cells ^{1,2}		✓	✓	
	CFTR protein expression (IHC)	$\geq 15\%$ cells ^{1,2}		✓	✓	
	Cell types transduced	Basal cells & secretory cells		✓	✓	
		No/limited expression in interstitial cells		✓	✓	
	Pre-existing A101 Immunity	No effect on expression		✓	✓	
Safety & Tolerability	Safety & tolerability	No \geq Grade 3 related AEs, no SAEs		✓	✓	
Clinical Activity	ppFEV ₁ (at 6-12 months)	$>4.5\%$ change from baseline		✓	Pending	
	CFQ-R-R (at 6-12 months)	>4 points change from baseline		✓	Pending	

Best available data as of May 24, 2024.

*Both events reported by one study participant (Participant 2) 1. Dannhoffer L et al. Am J Respir Cell Mol Biol 2009; 40:717–23. 2. Bell S et al. Lancet Resp Med 2020; 8:65–124.

Totally of Clinical & Biomarker Data To-date Supports **1E15 vg** as Intended Phase 2 Expansion Dose, 5E14 vg Dose Pending Additional Follow-Up

Dose Selection Criteria:		Target Profile	2E15 vg (n=4)	1E15 vg (n=3)	5E14 vg (n=1)	2.5E14 vg (n=1)
Expression	CFTR Δ R RNA expression (ISH)	$\geq 15\%$ cells ^{1,2}	✓	✓	✓	✗
	CFTR protein expression (IHC)	$\geq 15\%$ cells ^{1,2}	✓	✓	✓	✓
	Cell types transduced	Basal cells & secretory cells	✓	✓	✓	✓
		No/limited expression in interstitial cells	✗	✓	✓	✓
	Pre-existing A101 Immunity	No effect on expression	✓	✓	✓	Pending
Safety & Tolerability	Safety & tolerability	No \geqGrade 3 related AEs, no SAEs	✗	✓	✓	✓
Clinical Activity	ppFEV ₁ (at 6-12 months)	>4.5% change from baseline	✓	✓	Pending	Pending
	CFQ-R-R (at 6-12 months)	>4 points change from baseline	Not interpretable	✓	Pending	Pending

Cleared
Pending

Best available data as of May 24, 2024.

*Both events reported by one study participant (Participant 2) 1. Dannhoffer L et al. Am J Respir Cell Mol Biol 2009; 40:717–23. 2. Bell S et al. Lancet Resp Med 2020; 8:65–124.

Robust Safety, Biomarker, and Clinical Activity Profile Generated To-date Supports Advancement into Phase 2 Dose Expansion

- Expect to **begin enrollment in Phase 2 Expansion stage in H2 2024** starting with 1E15 vg (anticipate enrolling n= up to 9)
 - In parallel, complete evaluation of 5E14 vg as a potential 2nd Phase 2 dose by completing enrollment & follow-up of a 3rd participant in the 5E14 vg cohort in Phase I Dose Exploration
 - Amendment to AEROW submitted to the Cystic Fibrosis Therapeutics Development Network (TDN):
 1. Enroll pwCF with lower baseline ppFEV₁ (50-90%)
 2. Introduce 2nd lung biopsy procedure at 12 months
 3. Open cohort for 4D-710 in participants on CFTR modulators with persistent moderate to severe lung disease; expect to begin enrollment **in H2 2024**
 - Anticipate sharing interim data from AEROW in **mid-2025** after completing enrollment and f/u of Phase 2
- Initial GMP-ready suspension manufacturing process **completed in-house at 500-liter scale**; technology transfer initiation to commercial CDMO anticipated H1 2025

pwCF = people with cystic fibrosis; ppFEV₁, percent predicted forced expiratory volume in 1 second

Preliminary Registration Path for 4D-710 for Treatment of People with CF Who are Modulator-Ineligible/-Intolerant

Preliminary Phase 3 Design

N=	~60-80
Population	pwCF with low baseline ppFEV ₁ (planned ~40-80%)
Design	Randomized, placebo-controlled (with opportunity for cross-over)
Endpoints	Δ in: ppFEV ₁ , quality-of-life (CFQ-R-R), frequency of pulmonary exacerbations





Accelerated Approval

Additional FDA/EMA discussions to follow additional AEROW clinical and lung biomarker data in pwCF with lower baseline ppFEV₁ (50-90%) to evaluate correlation between clinical and biomarker endpoints

Initiation planned in **H2 2025**

pwCF = people with cystic fibrosis; CFQ-R-R: Cystic Fibrosis Questionnaire Revised Respiratory Domain

Pulmonology Pipeline Key Expected Milestones

VECTOR DELIVERY	PRODUCT CANDIDATE	INDICATION	EPIDEMIOLOGY (PREVALENCE)	RESEARCH CANDIDATE	IND-ENABLING	PHASE 1/2	PHASE 3	EXPECTED UPCOMING MILESTONES
PULMONOLOGY A101 Aerosol 	4D-710	Cystic Fibrosis Lung Disease (modulator ineligible / intolerant)	~15K WW					<ul style="list-style-type: none"> ▪ Mid-2025 Interim data update from Phase 1/2 AEROW clinical trial ▪ H2 2025 Pivotal trial initiation
		Cystic Fibrosis Lung Disease (combo with modulators)	~90K WW					<ul style="list-style-type: none"> ▪ H2 2024 Initiation of enrollment of modulator combination cohort
	4D-725	AIAT Deficiency Lung Disease	~200K U.S./EUMM					<ul style="list-style-type: none"> ▪ H2 2024 Program update

Acknowledgments: Participants and Their Families, Principal Investigators and Study Staff, CFF

Christopher Goss, MD
University of Washington

Manu Jain, MD
Northwestern University

Alex Gifford, MD
Rainbow Babies and Children's/
Cleveland Medical Center

Allen Lapey, MD
Massachusetts General Hospital

Henry Dorkin, MD
Boston Children's Hospital

Daniel Dorgan, MD
The Hospital of the University of Pennsylvania

Nauman A. Chaudary, MD
Virginia Commonwealth University Health

Karen S. McCoy, MD
Nationwide Children's Hospital

Scott Donaldson, MD
University of North Carolina at Chapel Hill

Jennifer Taylor-Cousar, MD
National Jewish Health

Joel Mermis, MD
University of Kansas Medical Center

George M. Solomon, MD
University of Alabama Child Health



CYSTIC FIBROSIS FOUNDATION
THERAPEUTICS
DEVELOPMENT NETWORK



Strong Cash Balance to Execute Through Key Near-Term Expected Milestones

Large Market Ophthalmology



4D-150 for **Wet AMD**

Initial interim 24-week analysis for Phase 2 Population Extension cohort (N=32) at ASRS: **July 2024**

Update on Phase 3 clinical trial design: **Q3 2024**

Initiation of first Phase 3 study: **Q1 2025**



4D-150 for **DME**

Initial interim 24-week analysis for Phase 2 Dose Confirmation cohort (N=22): **Q4 2024**



4D-175 for **GA**

IND filing: **Q2 2024**

Phase I initiation: **H2 2024**

Pulmonology



4D-710 for **CF**

Interim data update from Phase I/2 AEROW clinical trial: **Mid-2025**

Pivotal trial initiation: **H2 2025**

Cash Balance

\$589M cash as of end Q1 2024; Runway into H1 2027



THANK YOU

5858 Horton Street, Suite 455 | Emeryville, California 94608

(510) 505-2680 | Investor.Relations@4DMT.com

IR.4DMT.com | [LinkedIn](#)

4DMT CFTR IHC Assay Development

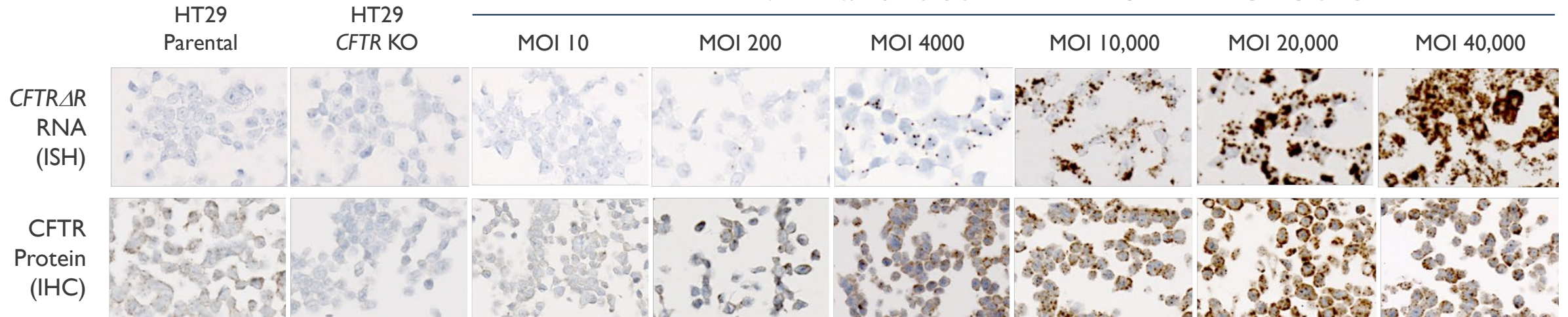
Validated by Extensive Control Testing to Ensure Specificity to CFTR Epitope

Test	Control Cell/Tissue	Result
Specificity and Signal Differential	Transfected vs. un-transfected HEK293T cells	Confirmed
	Untreated HT29 vs. CFTR CRISPR-modified knockout HT29 cell lines	Confirmed
	Vehicle-treated vs. 4D-710-treated NHP lung tissue	Confirmed
	Commercial lung samples: normal lung (n=10); genotyped CF lung (n=35)	Confirmed
	Transduced CRISPR-modified knockout HT29 cell lines	Confirmed
	Western blotting using IHC antibody (M3A7)	Confirmed
Sensitivity	Transduced CRISPR-modified knockout HT29 cell lines (transduction across range of MOIs)	Confirmed
Negative Control	CFTR null lung samples (CF Foundation)	Confirmed
	NHP lung tissue treated with vehicle & A101 carrying alternate transgene	Confirmed
	Mouse IgG I-matched isotype controls (all tested lung samples)	Confirmed

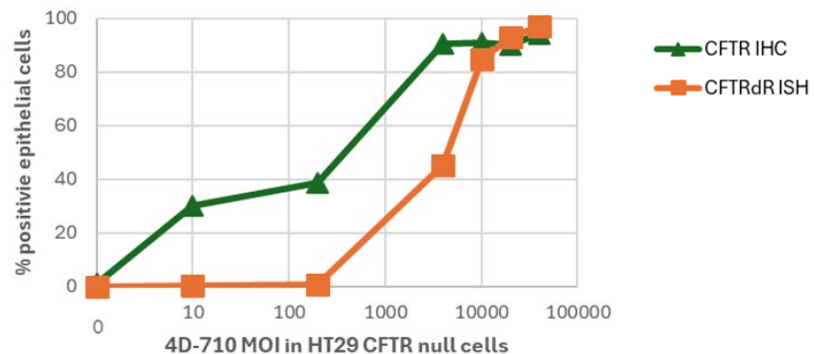
IHC & ISH Assay Specificity and Sensitivity

Superior Sensitivity of IHC Compared to ISH Confirmed in 4D-710–Transduced HT29 *CFTR* CRISPR KO Cells

4D-710–Transduced HT29 *CFTR* KO Cells



CFTR IHC and ISH % (+) vs 710 MOI in HT29 KO Cells



- IHC is more sensitive and has a different dynamic range compared to ISH

Historical & 4DMT Data Demonstrate Feasibility of Repeat Dosing for Aerosolized 4D-710

Rationale

- Repeat dosing desirable for this population
- **Historical data demonstrates feasibility of redosing:**
 - **NHP¹:** Repeat dose **safe and well-tolerated**, transgene expression levels for repeat dose similar to single dose
 - **Rabbit² and ferret³:** **Similar transgene expression results** for repeat dose **in the presence of treatment emergent serum & anti-capsid NAb**s
 - **Human⁴:** 70 patients with aerosol AAV.CFTR – **3 doses over 2 months well tolerated**

4DMT Results

- **4DMT data demonstrates initial feasibility:**
 - **NHP pre-existing anti-A101 immunity** (cross-reactivity): Safe & equivalent transduction vs immune (-) NHP
 - **4D-710 AEROW in 5 pwCF with pre-existing anti-A101 immunity:** Safe & equivalent transduction vs immune (-) pwCF

Next Steps: AEROW study results will inform timing

- Plan to implement lung biopsies **at Month 12** post-dosing to understand long term expression kinetics
- Observe durability of clinical activity: CFQ-R-R & ppFEV₁

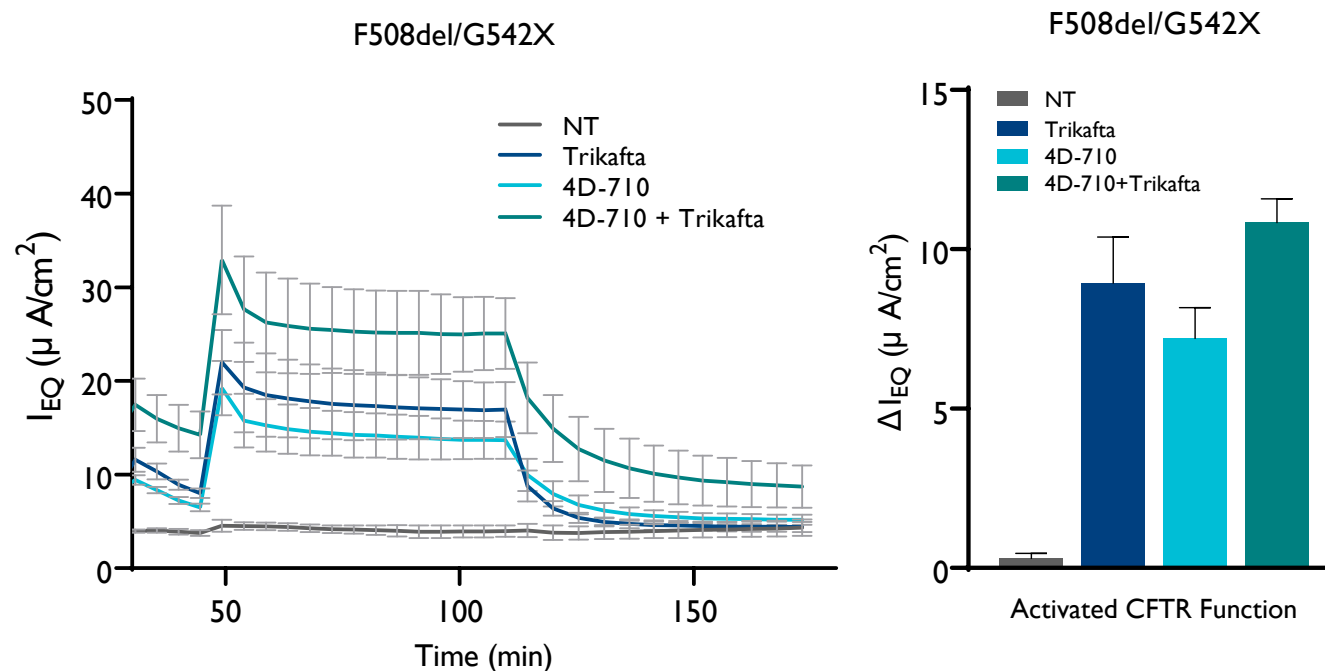
1. Fischer AC et al., *Mol Ther* 2003; 8:918-26 2. Beck SE et al. *J Virol* 1999; 73:9446-55 3. Tang Y et al., *Mol Ther Methods Clin Dev* 2020;19:186-200; Tang Y. et al., *Mol Ther Methods Clin Dev* 2023;29:70-80 4. Moss RB et al., *Chest* 2004;125:509-21; Moss RB et al., *Hum Gene Ther* 2007;18:726-32. CFQ-R-R, Cystic Fibrosis Questionnaire-Revised (respiratory symptoms scale); pwCF = people with cystic fibrosis; ppFEV₁, percent predicted forced expiratory volume in 1 second.

Strong Rationale for 4D-710 + Trikafta Combination

Rationale

- **Unmet need remains**
 - Trikafta Ph 3 results suggest population with suboptimal response, remaining unmet need
- **Scientific rationale: additive effects**
 - Different MOAs
 - Different cells & cell types may be targeted
 - Modulators treat extra-pulmonary tissues
- **Scientific rationale: synergistic effects**
 - 4D-710 transduction increased by modulators (mucus thinning)
 - Modulators predicted to bind/improve CFTR Δ R function
 - Targeting different cell types & distribution

In vitro: 4D-710+Trikafta = CFTR Function Improvement



Next Steps:
Plan to begin enrolling combination cohort in H2 2024

CFTR activity in CFhBE ALI airway epithelial cultures transduced with 4D-710 (1×10^6) for 7 days and/or Trikafta ($2 \mu M$ VX-445, $3 \mu M$ VX-661, $0.1 \mu M$ VX-770) for 24hr; $n=3$ different experiments; error bars, \pm SEM. F508del/F508del Donor ID#: KKCFFT006f; F508del/G542X Donor ID#: KKD017K. CFhBE, cystic fibrosis primary human bronchial epithelial cells; ALI, air-liquid interface; CFTR, cystic fibrosis transmembrane conductance regulator; NT, not treated.